

CITY OF ENCINITAS ENGINEERING DEPARTMENT

WIRO PARK PLAYGROUND EQUIPMENT REPLACEMENT

Community Meeting

May 28, 2026

Michael Baker
INTERNATIONAL



WIRO PARK – WELCOME & PROJECT BACKGROUND

Playground replacement project

Current playground could not be replicated due to current safety codes

Grant funding limits scope of improvements

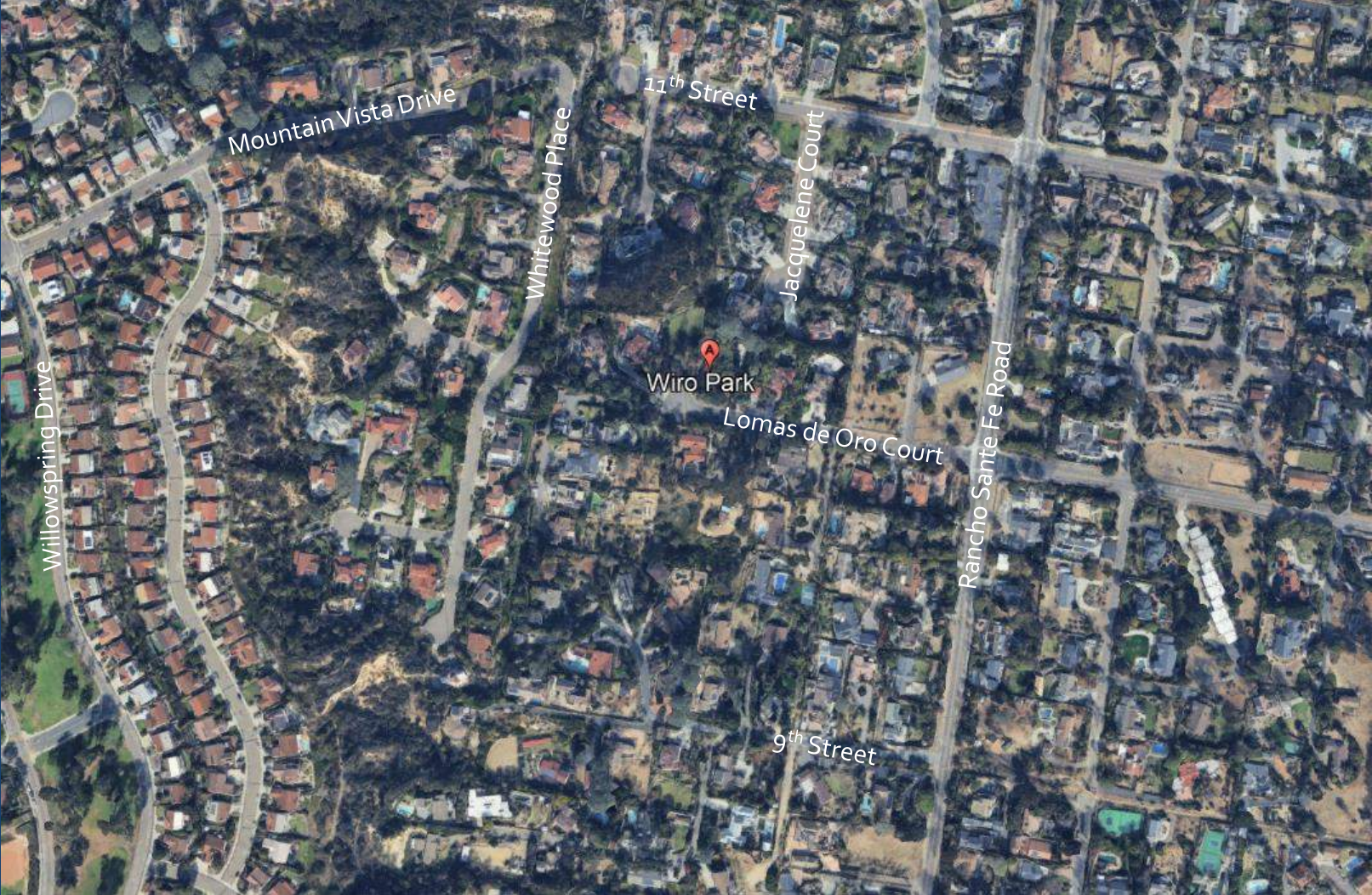
Limited to area within current play area curb

Responding to previous community comments and soliciting final input from community

WIRO PARK – PROJECT TIMELINE



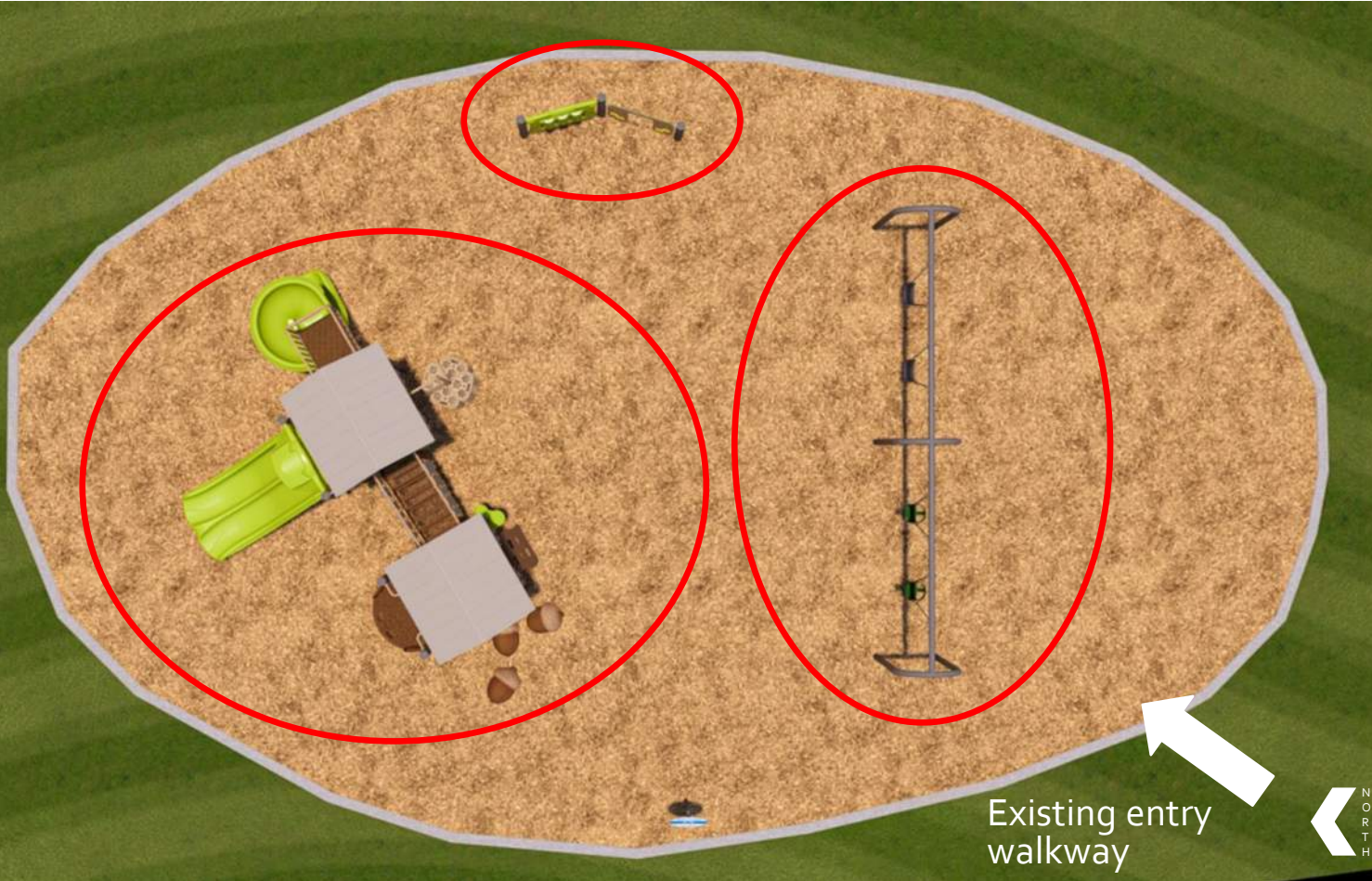
WIRO PARK - PROJECT SITE



WIRO PARK - EXISTING CONDITIONS



WIRO PARK – PLAYGROUND – Nature Themed



▪ Key Features

- Exceeds ADA Accessibility Requirements
- 4 Swings (2 Standard, 2 Toddler)
- Structure with Integral Solid Roofs
- Interactive Play Panel
- Rubber Surfacing

WIRO PARK – PLAYGROUND – Nature Themed



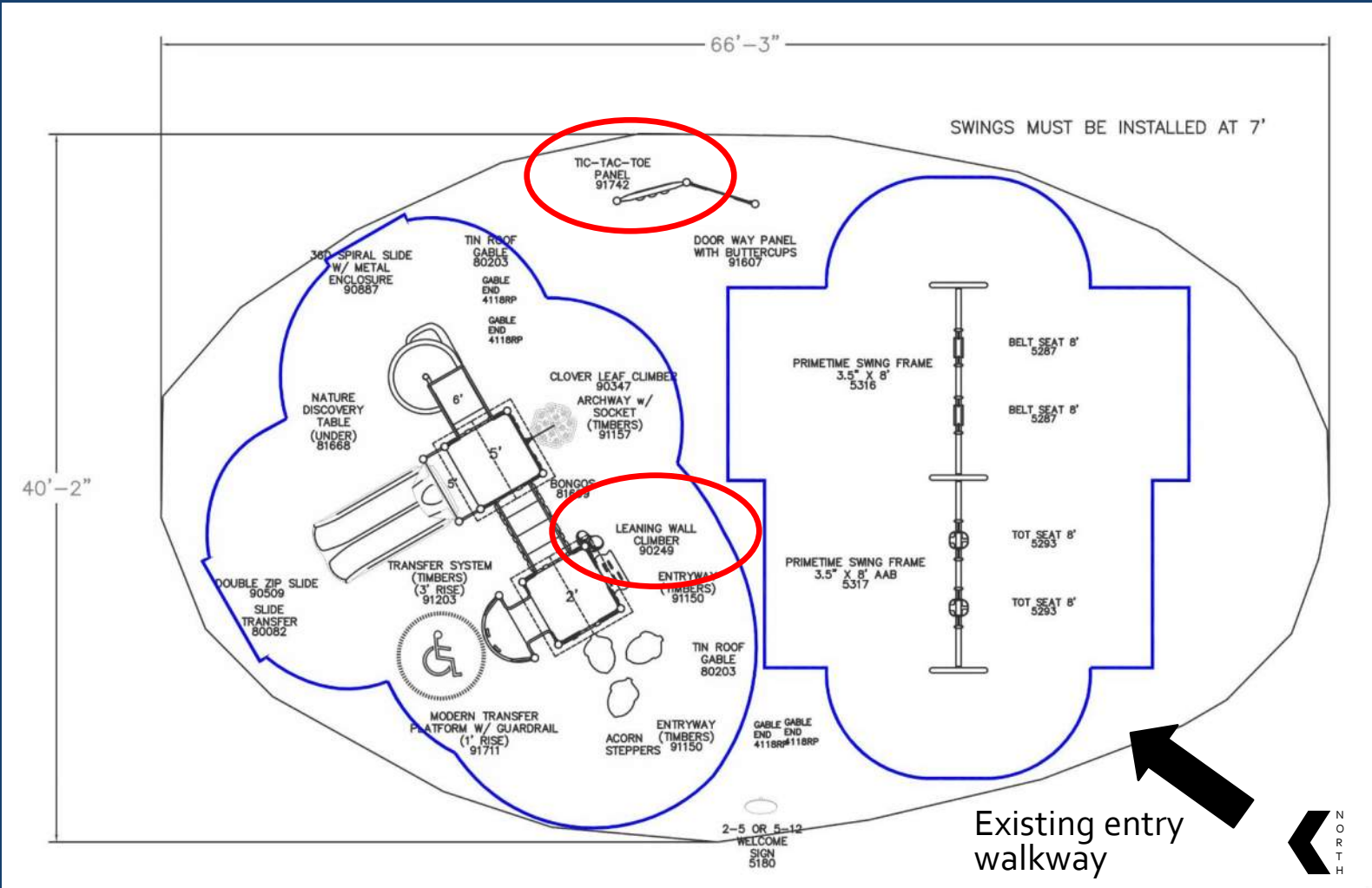
WIRO PARK – PLAYGROUND – Nature Themed



WIRO PARK – PLAYGROUND – Nature Themed



WIRO PARK – PLAYGROUND – Safety Zones



WIRO PARK – PLAYGROUND – Comments Received

May 2025

The acorns for stepping into the playground set. They look like the rounded shape and the top will not be as easy to walk up as possibly 3 “stumps” with flat tops. I don’t know if you have acorns at another playground that we should look at. I know I’ve seen “stumps” with flat tops - 3 different levels, like a stair case almost, that kids can walk up to the flat level of the playground equipment.

- The acorns for stepping into the playground are not the main access into the equipment and are used as a theming element on the periphery. The main access to the equipment is a traditional platform entry.

Can you explain the height explanation of the swings - I see them as 3.5 x 8”, guessing that means the bar is 8 feet high/tall? Then it also refers to the “belt seat 8” “ and the “tot seat 8” “ ... but up in the upper right corner of that last page it also has “swings must be installed at 7” “ what is this?

- The swing is normally 8 feet tall but must be installed at 7 feet tall to fit the space.

Is there any way to make the “flower” wall on the playground equipment something the kids could climb up (opposite the couple of steps on the other side) for balance skills? Maybe the GameTime Wrinkle Wall or possibly the Narrows Climber — something that actually can be used instead of just a flat picture wall? It looks like the space is available for something else to play on.

- Yes, the flower wall panel has been replaced with a climbing wall.



WIRO PARK – PLAYGROUND – Comments Received

May 2025

The small Flower Spinner Half Panel and the Door Way Panel w/Buttercups - because the surface will be rubber or spongy - could some other jungle gym style bars be placed here?

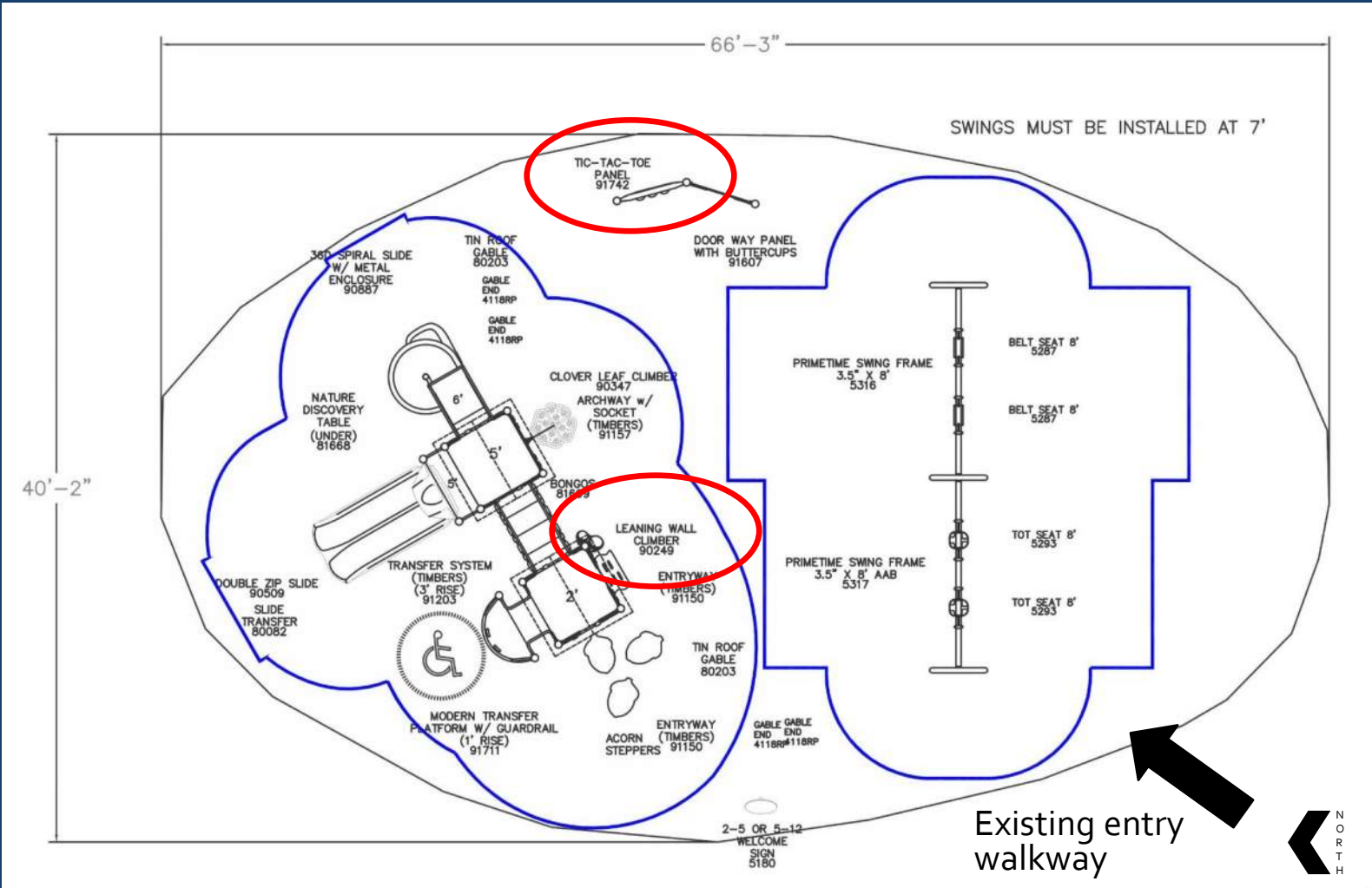
- There is not space to add a climbing element without conflicting with the safety zone of the swings and the structure. These freestanding panels don't have safety zones, which allows them to fit within the space.

For the Flower Wall, is it possible to put in the rock climbing wall or climbing thing? If not because of the fall zone, what about tic-tac-toe? Just something active that can be used rather than a pretty wall.

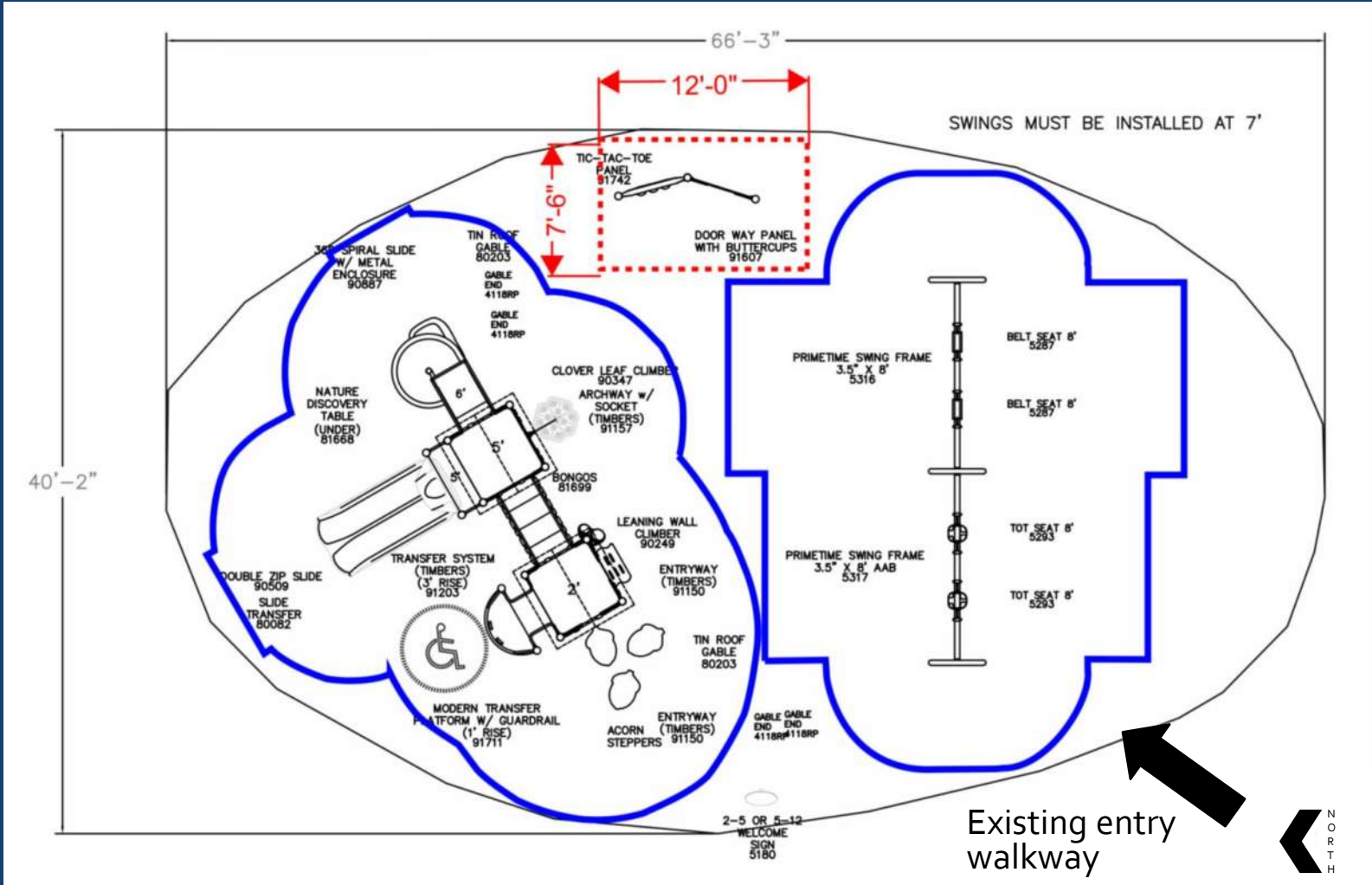
- Yes, the flower spinner panel wall was replaced with the tic-tac-toe panel.



WIRO PARK – PLAYGROUND – Safety Zones



WIRO PARK – PLAYGROUND – Safety Zones



WIRO PARK – NEXT STEPS

Community
Workshop

May 2026



Receive and
Incorporate
Comments
from
Community

June 2026



Parks &
Recreation
Commission

August 2026



City Council

September
2026



Bid Award and
Construction
Begins

Est. December
2026



Construction
Complete

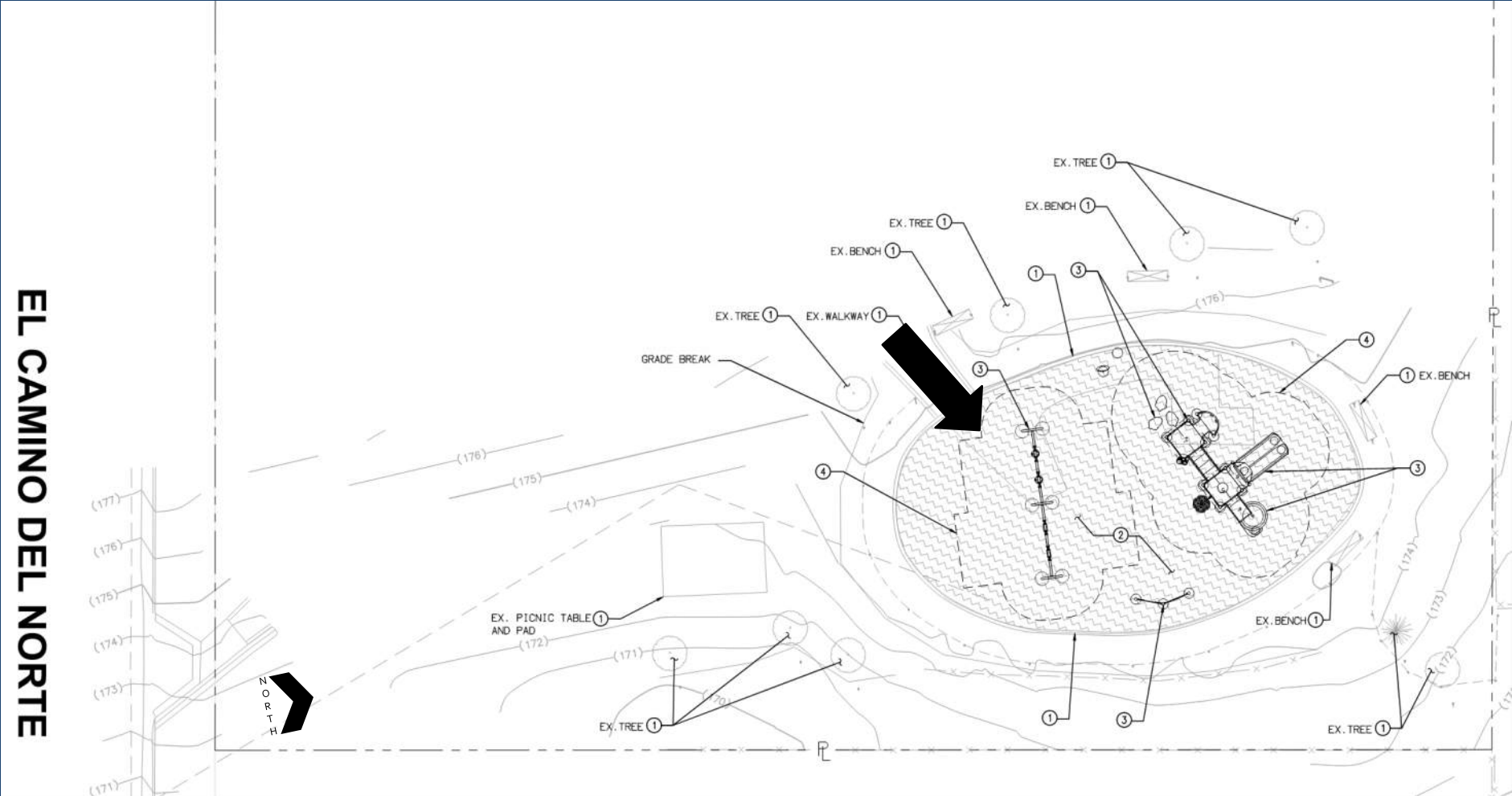
Est. May 2027

THANK YOU!

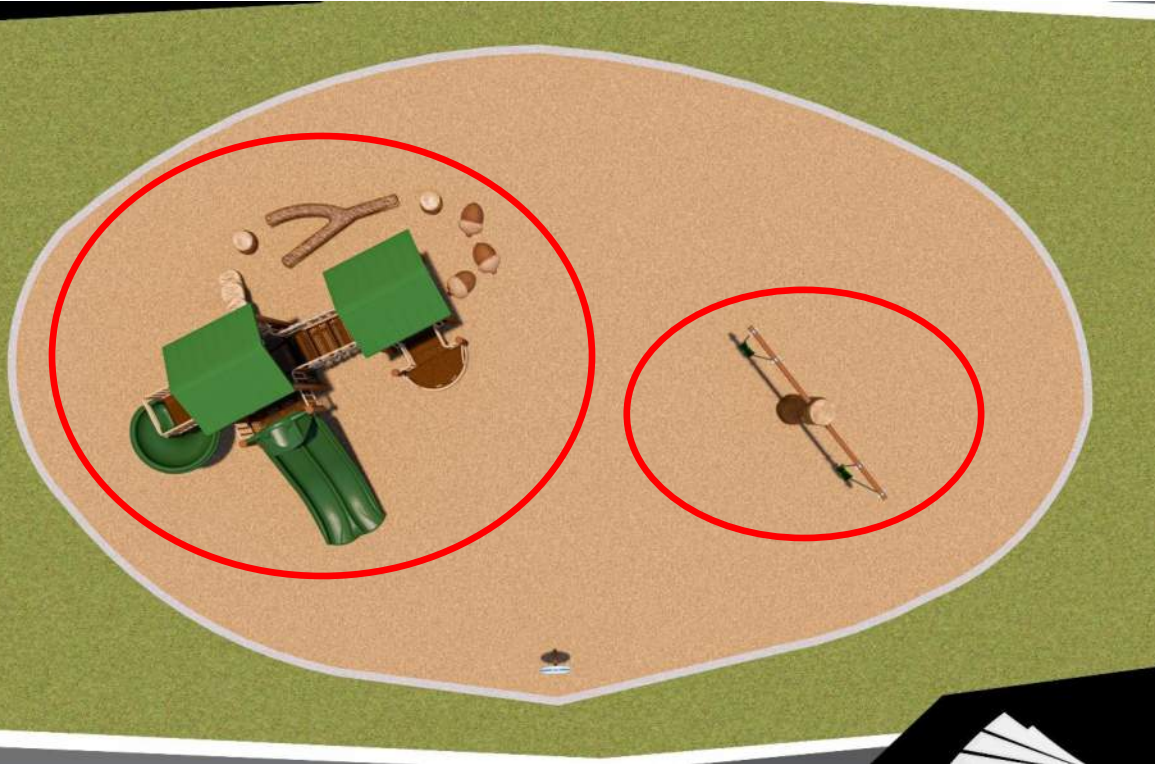




WIRO PARK – PLAYGROUND



WIRO PARK – PLAYGROUND – April 2025



▪ Key Features

- Exceeds ADA Accessibility Requirements
- Swings (2 Standard)
- 5-12 Structure
- Integral Solid Roofs
- Rubber Surfacing

WIRO PARK – PLAYGROUND – April 2025



WIRO PARK – PLAYGROUND – April 2025

